



## TouchDown™ Video Command Center



**Central Interface**, access your entire fleet even across multiple sites



**Manage and request video clips**



**Hands-Free convenience** with WiFi data download



**Encrypted cloud-based storage**, accessible from anywhere you are.



**Remotely update** configurations and firmware from your desktop



**See what's going on in real-time** with System health checks, GPS tracking and geo-fencing



**Automatic email notifications** keep tabs of your fleet while on the go



Get notifications on your mobile or desktop

# Easy Fleet Video Management

Advanced video technology should be built to make your life easier not complicated! 247's school bus industry-experience gives us a true insider-perspective on what works and what can be improved.

You've asked us for easy-to-use all-in-one solutions that require low maintenance and hands-free operation, so that you can focus on the operation of your fleet and the safety of your students.

With 247, your video comes to you! No more trips to the bus yard pulling hard drives! Wirelessly download video, track speeding, get GPS data, and more, with TouchDown™!

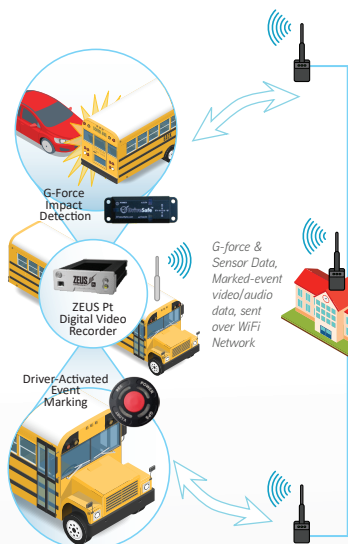
**247**  
SECURITY

247securityinc.com  
1.866.693.7492

## TouchDown™ Video Command Center

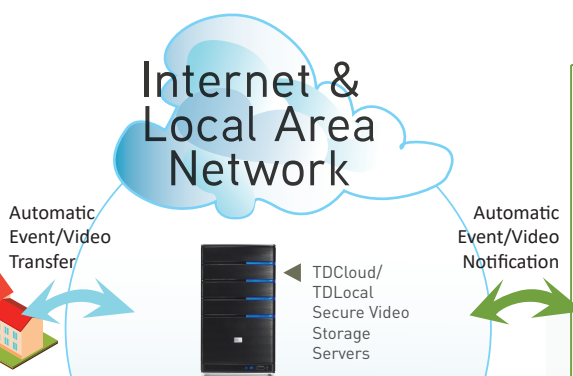
### HOW IT WORKS

#### 1 Capture & SEND



TouchDown™—featuring HandsFree™ Wireless—enables vehicles to automatically transfer video and sensor data over a Local/WiFi Network right to your TD Server.

#### 2 Transfer & STORE

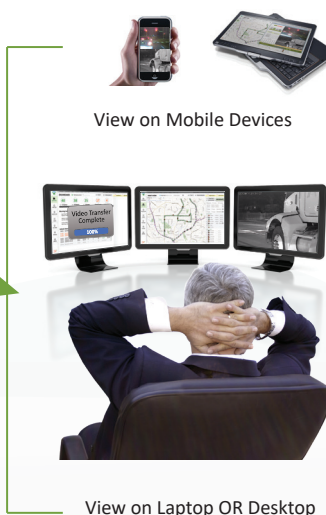


#### Ultra-Fast, 5GHz WiFi Video Transfer!

	5GHz	2.4GHz
Clip Length	Download Time	Download Time
5 min	<1 min	1 hour
30 min	<5 min	4 hours
60 min	<10 min	8 hours

Video Download Speed Comparison, from 5 Cameras Recorded at 1080p

#### 3 Display & SEE



Authorized Users can easily use TouchDown to access video & data on ANY desktop, laptop or mobile device connected to the internet, via a Local or WiFi Network.

## TOUCHDOWN™ FEATURES

Feature	Description	Benefit
<b>Video Command Center</b>	Video Command Center allows you to manage your fleet and view video from all your devices under one centralized interface. You can configure your fleet DVR system settings, view video, search and display vehicle event data, or any critical information you may need; and it is displayed in a map view or text view report. The TDII Video Command Center allows you to easily find out what/where/when/how it happened.	<b>Everything Is in One Place</b> <ul style="list-style-type: none"> <li>Access all data from one centralized interface</li> <li>Save time and money!</li> </ul> <b>Cross-Platform Access</b> <ul style="list-style-type: none"> <li>Access TouchDown™ from any desktop or mobile device!</li> </ul>
<b>HandsFree Wireless Transfer</b>	247's HandsFree wireless transfer system enables DVRs to automatically send video clips, camera system health reports, and GPS data to the server over ultra-fast WiFi(5GHz). HandsFree does the work, so you don't have to!	<b>Hands-Free Video &amp; Data Transfer</b> <ul style="list-style-type: none"> <li>No more going to the bus!</li> <li>No more fussing with cables and hard drives.</li> </ul>
<b>Secure Video Storage</b>	Video data is encrypted through our proprietary encryption protocol. For your protection, only our DVRViewer software application may be used for video playback.	<b>Your Data Is Protected</b> <ul style="list-style-type: none"> <li>Only authorized users can view video</li> </ul>
<b>Auto/On-Demand Marked Video Transfer</b>	When a driver presses the "panic button" or Event Marker, the system creates a marked-video clip, which can be set to automatically download to the server along with date/time/GPS and other vehicle sensor data. Users can also request clips by providing vehicle ID/date/time and length of clip, and have the requested clip automatically download to the server, and be notified by email when it is available for viewing.	<b>Automatic Data Transfer</b> <ul style="list-style-type: none"> <li>All video is transferred without user-intervention, regardless of whether the driver reports in or not.</li> </ul> <b>Pull Video Clips On-Demand</b> <ul style="list-style-type: none"> <li>Get the exact video clip you need; request by user-specified vehicle, date, time etc.</li> </ul>
<b>DVR Remote Maintenance</b>	No more having to go to the bus to tweak system settings. Now you can change settings such as frame rate and more directly from the TouchDown™ Video Command Center. Now you can configure your systems, even while you're offsite.	<b>Easy Maintenance</b> <ul style="list-style-type: none"> <li>Adjust settings and upgrade software (firmware) right from your desktop or mobile devices.</li> </ul>
<b>DVR Auto HealthCheck</b>	On start-up, the system performs a series of checks to make sure everything is in working order. Any errors are reported through TouchDown™ so you can address them immediately, giving you peace-of-mind knowing that all video systems are in operating order before you send them out on the road.	<b>Peace-of-Mind</b> <ul style="list-style-type: none"> <li>Automatic status reporting of DVR, cameras, temperature, etc.</li> <li>If there is a problem, you will receive a health status update to take immediate action to resolve any issues</li> </ul>
<b>MiniTrack GPS Vehicle Tracking</b>	With the power of GPS, MiniTrack™ you get a wealth of information to use for liability management, training, and much more! MiniTrack™ tells you where your vehicle has been, how fast it was going, when and where it stopped, if it spent time idling—best of all, there are no recurring service fees!	<b>Map View of Data</b> <ul style="list-style-type: none"> <li>View events mapped to a route and geographic area</li> <li>Synchronize to video clip and view the actual event</li> </ul> <b>Low Cost Passive GPS</b> <ul style="list-style-type: none"> <li>Full power of GPS, without high cost of "real-time-only" GPS</li> </ul>
<b>Multiple Accounts</b>	TD allows you to setup multiple user accounts with different access levels. Accounts are password protected so only authorized staff can access the data.	<b>Multiple Users</b> <ul style="list-style-type: none"> <li>Get more from TD by allowing access to all staff who need it</li> <li>Delegate video management, free your time for other duties</li> </ul>
<b>Event History Reports</b>	TD provides a complete history of every trip, along with GPS routes, events (speeding, stopping, idling, parking, bus stops, impacts, stop-arm violations, and driver-marked events); for you to view on-screen or export to a spreadsheet for analysis	<b>Data Text Reports</b> <ul style="list-style-type: none"> <li>Good for analyzing data at a fleet level or reviewing the activity of a vehicle, driver or group over a period of time.</li> <li>Export data to Excel for detailed analysis, or archiving</li> </ul>
<b>Email Alerts</b>	TD offers Email Alerts, allowing you to be free from the constraints of your desk so you can be more productive. Customized alerts can be sent to your desktop or mobile device so that you can be where you need to be, while still keeping tabs on what is going on with your fleet.	<b>Instant Updates</b> <ul style="list-style-type: none"> <li>Get instant alerts when Marked/Requested Video Clips have been downloaded</li> <li>Get alerts when there is a System Health warning</li> </ul> <b>Mobility</b> <ul style="list-style-type: none"> <li>Be where you need to be, while receiving updates on your mobile devices</li> </ul>